

MAGNA TYRES GROUP

EARTHMOVER



MAGNA MA08 L5

20.5R25** 23.5R25** 26.5R25** 29.5R25**

Get all the benefits of Magna Radial Tyre Technology!

- Extra deep aggressive open tread design
- Reinforced crown and sidewall
- Excellent traction



All Steel Radial Construction - Multifunctional

MAGNA MA08

EARTHMOVER

MAGNA TYRES develops and manufactures high quality tyres for construction and mining purposes, especially designed for the most severe applications.

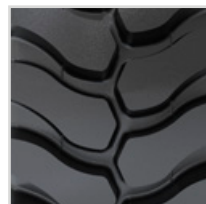
This tyre is designed for use on wheel loaders, dozers and graders requiring maximum traction.

The optimized square-shouldered design provides stability and protection from cuts.

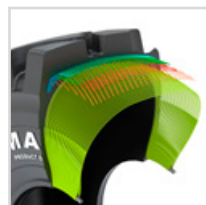
The aggressive, open tread pattern provides grip and traction.



The tread blocks provide stable ground contact.



All steel radial construction. Improved protector plies optimize load performance and operator comfort.



New improved technology of the high-tech casing reduces heat build up inside the tyre.



Tyre size	Pattern	Tra code	Load symbol	Max. speed (km/h)	Overall diameter (mm)	Section width (mm)	Tread depth (mm)	Rim	Single max load/pressure	Tyre weight (kg)
20.5R25	MA08	L5	**	10 km/h	1548	521	72	17.00/2.0	11500 kg/6.5 bar	365
23.5R25	MA08	L5	**	10 km/h	1662	592	78	19.50/2.5	14500 kg/6.5 bar	520
26.5R25	MA08	L5	**	10 km/h	1800	665	87	22.00/3.0	18500 kg/6.5 bar	702
29.5R25	MA08	L5	**	10 km/h	1900	720	95	25.00/3.5	22400 kg/6.5 bar	866

Magna Tyres Group
P.O. Box 436
5140 AK Waalwijk
The Netherlands

Magna Tyres Group
Elzenweg 7
5144 MB Waalwijk
The Netherlands

Phone: +31 416 675 220
Fax: +31 416 675 221
Email: info@magnatyres.com
www.magnatyres.com

