

# MAGNA TYRES GROUP

EARTHMOVER



## MAGNA MA02 E3+ / L3+

23.5R25\*\*

26.5R25\*\*

29.5R25\*\*

**Get all the benefits of Magna Radial Tyre Technology!**

- Self cleaning and non-directional tread patterns
- High reliability and long tread life
- Excellent traction



**All Steel Radial Construction - Multifunctional**

# MAGNA MA02

EARTHMOVER

**MAGNA TYRES** develops and manufactures high quality tyres for construction and mining purposes, especially designed for the most severe applications.

This tyre is designed for use on wheel loaders, articulated dump trucks, scrapers and dozers.

Side wall protection and flotation are enhanced by the wide shoulder design.

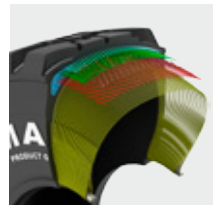
The tread compound provides excellent performance against cutting and abrasion.



Improved traction and performance through extra deep non-directional tread design.



All steel radial construction. Improved protector plies optimize load performance and operator comfort.



New improved technology of the high-tech casing reduces heat build up inside the tyre.



| Tyre size | Pattern | Tra code | Star rating | Max. distance per hour | Overall diameter (mm) | Section width (mm) | Tread depth (mm) | Rim       | Single max load/pressure | Tyre weight (kg) |
|-----------|---------|----------|-------------|------------------------|-----------------------|--------------------|------------------|-----------|--------------------------|------------------|
| 23.5R25   | MA02    | E3+/L3+  | **          | 50 km/h                | 1615                  | 598                | 38               | 19.50/2.5 | 9250 kg/4.5 bar          | 335              |
|           |         |          |             | 10 km/h                |                       |                    |                  |           | 14500 kg/5.0 bar         |                  |
| 26.5R25   | MA02    | E3+/L3+  | **          | 50 km/h                | 1753                  | 686                | 41               | 22.00/3.0 | 11500 kg/5.0 bar         | 463              |
|           |         |          |             | 10 km/h                |                       |                    |                  |           | 18450 kg/6.5 bar         |                  |
| 29.5R25   | MA02    | E3+/L3+  | **          | 50 km/h                | 1880                  | 737                | 44               | 25.00/3.5 | 13950 kg/5.0 bar         | 597              |
|           |         |          |             | 10 km/h                |                       |                    |                  |           | 22350 kg/6.5 bar         |                  |

Magna Tyres Group  
P.O. Box 436  
5140 AK Waalwijk  
The Netherlands

Magna Tyres Group  
Elzenweg 7  
5144 MB Waalwijk  
The Netherlands

Phone: +31 416 675 220  
Fax: +31 416 675 221  
Email: info@magnatyres.com  
www.magnatyres.com

